

Metron 07 CI

METAL DETECTION

**TUNNEL METAL DETECTOR WITH INTEGRATED EVALUATION ELECTRONICS
USED IN BELT CONVEYORS FOR QUALITY CONTROL OR MACHINE PROTECTION.**

Reliable *in Process and Detection*
Durable *in Technology and Performance*
Easy *in Installation and Handling*

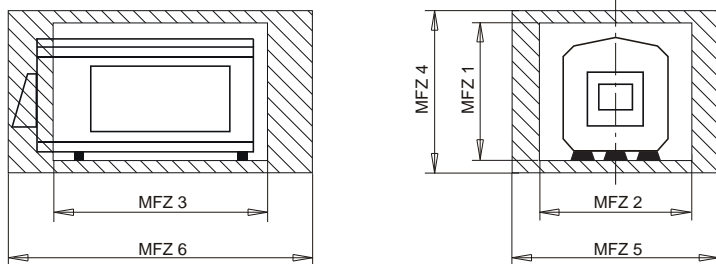
imagePHASE for best detection results
 Reliable and safe metal detection technology
 Process and condition monitoring
 Indestructible and maintenance-free construction
 Resistant against external influences
 Highest precision in long-term operation
 Network connectivity and data management
 Password protected user management
 Hygienic Design



Applications

Quality inspection
 (to meet the requirement of
 ISO 9000, HACCP, IFS, BRC, SQF)
 Machinery protection

Metal Free Zone (MTZ)



Calculating the 'metal free zone'

For Non-moving Metals

$$\text{MFZ 1} = \text{LH} + 2 \text{ SH} + 60\text{mm}$$

$$\text{MFZ 2} = \text{SL} + \text{LH}$$

$$\text{MFZ 3} = \text{LB} + \text{LH}$$

For moving metals

$$\text{MFZ 4} = 3 \text{ LH} + 2 \text{ SH} + 60\text{mm}$$

$$\text{MFZ 5} = \text{SL} + 3.5 \times \text{LH}$$

$$\text{MFZ 6} = \text{LB} + 3 \text{ LH}$$

Position the detector aperture in the middle of the 'metal free zone'
 For the other dimensions: position the detector symmetrical in relation to the aperture.

