

# Metron 07 CI

## METAL DETECTION

**TUNNEL METAL DETECTOR WITH INTEGRATED EVALUATION ELECTRONICS  
USED IN BELT CONVEYORS FOR QUALITY CONTROL OR MACHINE PROTECTION.**

**Reliable** *in Process and Detection*  
**Durable** *in Technology and Performance*  
**Easy** *in Installation and Handling*

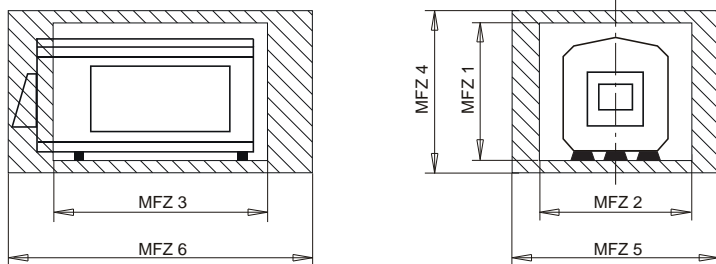
imagePHASE for best detection results  
 Reliable and safe metal detection technology  
 Process and condition monitoring  
 Indestructible and maintenance-free construction  
 Resistant against external influences  
 Highest precision in long-term operation  
 Network connectivity and data management  
 Password protected user management  
 Hygienic Design



### Applications

Quality inspection  
 (to meet the requirement of  
 ISO 9000, HACCP, IFS, BRC, SQF)  
 Machinery protection

### Metal Free Zone (MTZ)



### Calculating the 'metal free zone'

#### For Non-moving Metals

MFZ 1 = LH + 2 SH + 60mm

MFZ 2 = SL + LH

MFZ 3 = LB + LH

#### For moving metals

MFZ 4 = 3 LH + 2 SH + 60mm

MFZ 5 = SL + 3.5 x LH

MFZ 6 = LB + 3 LH

Position the detector aperture in the middle of the 'metal free zone'

For the other dimensions: position the detector symmetrical in relation to the aperture.

